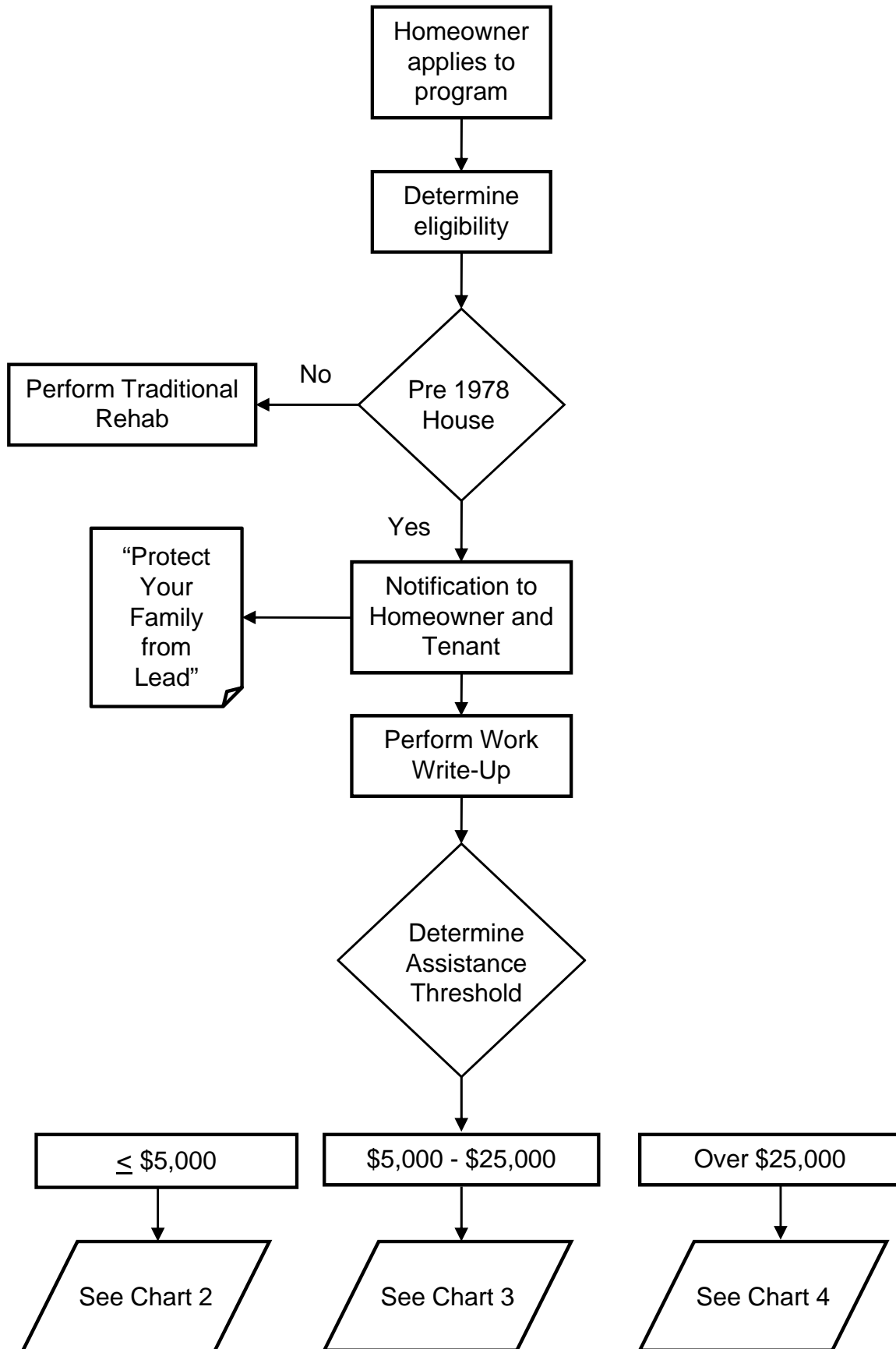
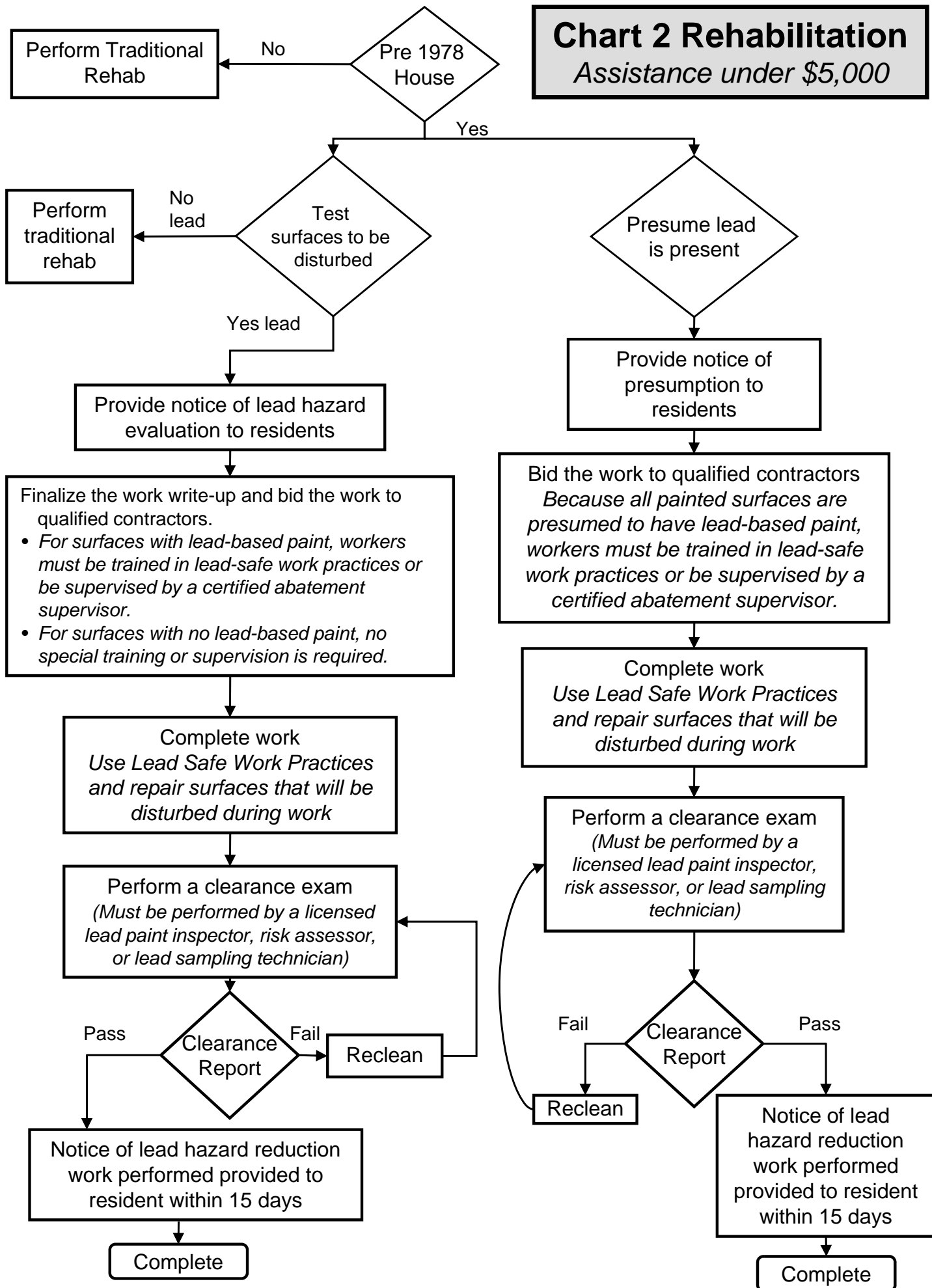


# Chart 1 Rehabilitation Process

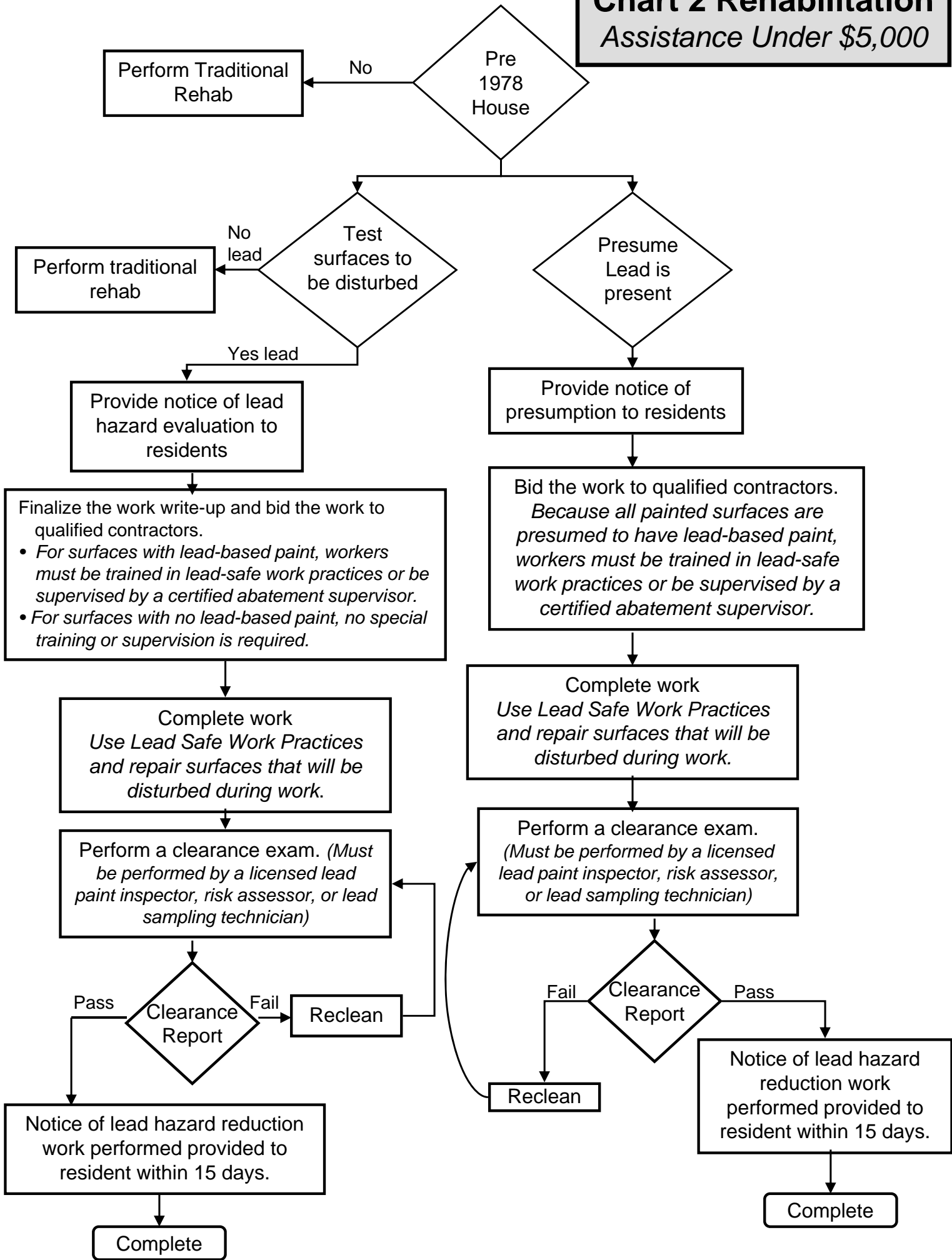
*Application to Assistance Threshold*



## Chart 2 Rehabilitation Assistance under \$5,000

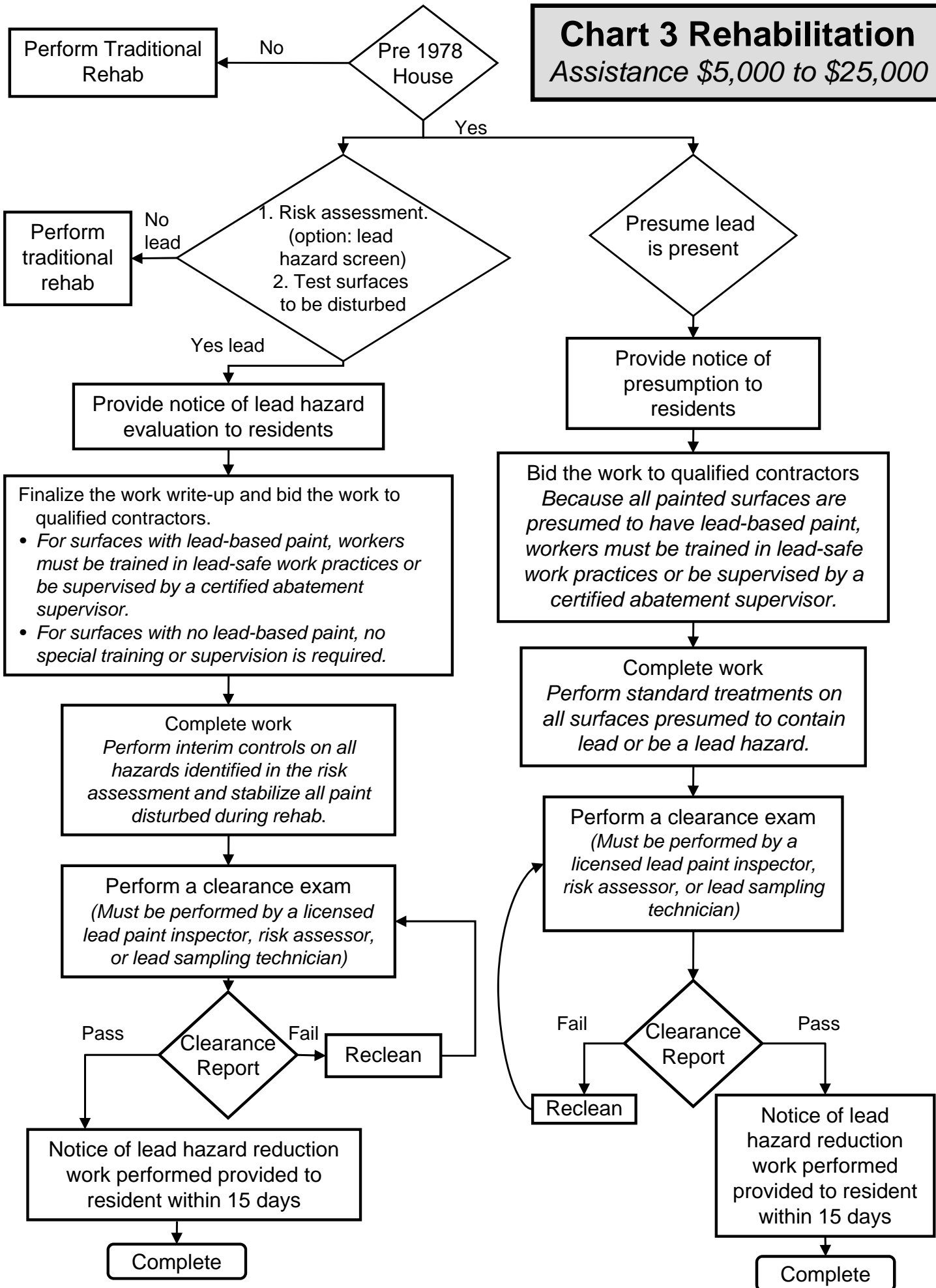


# Chart 2 Rehabilitation Assistance Under \$5,000



# Chart 3 Rehabilitation

Assistance \$5,000 to \$25,000



# Chart 4 Rehabilitation Assistance over \$25,000

